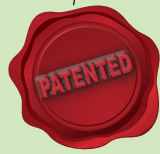


Acurain™ 6025 SD

ACURAIN SPRINKLER



Germination Irrigation



Irrigation Full Coverage



Pasture Irrigation



Field Crops



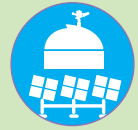
Crop Coloring



Crop Cooling



Animal Husbandry

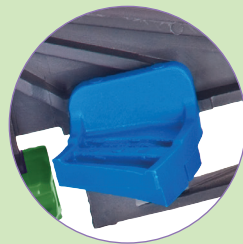


Cleaning & Cooling



Special Arc Water Pass

Special arched water path facilitates wider radius of throw, reducing the number of sprinklers required per unit area.



Innovative Super Diffuser Plate

Innovative hammer with SD (super-diffuser) plate design for uniform distribution.



Red Cap for Protection

Plastic protection cap protects the spring from sand & gives longer life to sprinkler.



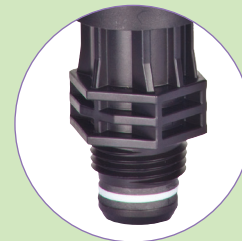
Innovative Bayonet Nozzle Design

Colour coded bayonet nozzles with integrated stream straightening vanes in nozzles for maximum throw.



Equipped with High Performance Washer for Rotation

Special washer used to give uniform & hassle free rotation.



Threaded Connection

For connectivity with assembly 1/2" male or 3/4" female BSP threaded connection is available.

Acurain 6025 SD

Additional Features

- **Manufactured from special grade polymer material:** High impact and heavy-duty plastic materials for resistance to corrosion, chemicals and radiation.
- **Excellent Precipitation:** Gentle precipitation, no damage to flowers / plants.
- **Quality Comes First:** Each batch is tested for stringent quality parameters.

Applications

Irrigation and germination of vegetables, field crops and flowers. Specially designed for short irrigation cycles for germination

Specifications

- Discharges : 540-1270 lph
- Diameter : 19 m to 27 m
- Recommended Pressure : 2.5 kg/cm² to 4 kg/cm²
- Inlet Connection : 1/2" BSP male threaded 3/4" female threaded
- Orange nozzle (2.8 mm), red nozzle (3.0 mm) sprinklers used with Rainport assembly and other nozzles are used with Quick Connect Sprinkler system.
- Easy to install with different mounting options. Please refer to "Polyfittings & Accessories" section.

Performance Table - Acurain 6025 SD

Precipitation rates (mm/hr) & uniformity (CU) at various spacing

Nozzle (mm)	P (kg/cm ²)	Q (lph)	D (m)	Precipitation (mm/hr) / spacing (m)					
				12x12	12x14	12x15	14x14	15x15	16x16
2.8 Orange	2.5	540	19	3.8	3.2	3.0			
	3.0	595	21	4.1	3.5	3.3	3.0		
	3.5	640	21	4.4	3.8	3.6	3.3		
	4.0	685	22	4.8	4.1	3.8	3.5		
3.0 Red	2.5	585	21	4.1	3.5	3.3	3.0		
	3.0	640	23	4.4	3.8	3.6	3.3		
	3.5	690	23	4.8	4.1	3.8	3.5		
	4.0	735	23	5.1	4.4	4.1	3.8		
3.2 Green	2.5	670	23	4.7	4.0	3.7	3.4	3.0	
	3.0	730	23	5.1	4.3	4.1	3.7	3.2	
	3.5	790	24	5.5	4.7	4.4	4.0	3.5	
	4.0	840	24	5.8	5.0	4.7	4.3	3.7	
3.5 Blue	2.5	780	24	5.4	4.6	4.3	4.0	3.5	3.0
	3.0	850	24	5.9	5.1	4.7	4.3	3.8	3.3
	3.5	920	24	6.4	5.5	5.1	4.7	4.1	3.6
	4.0	980	26	6.8	5.8	5.4	5.0	4.4	3.8
4.0 Black	2.5	1005	26	7.0	6.0	5.6	5.1	4.5	3.9
	3.0	1100	26	7.6	6.5	6.1	5.6	4.9	4.3
	3.5	1185	27	8.2	7.1	6.6	6.1	5.3	4.6
	4.0	1270	27	8.8	7.6	7.1	6.5	5.6	5.0

Color code - Coefficient of uniformity

CU < 85%	CU = 85-88%	CU = 88-92%	CU > 92%
----------	-------------	-------------	----------

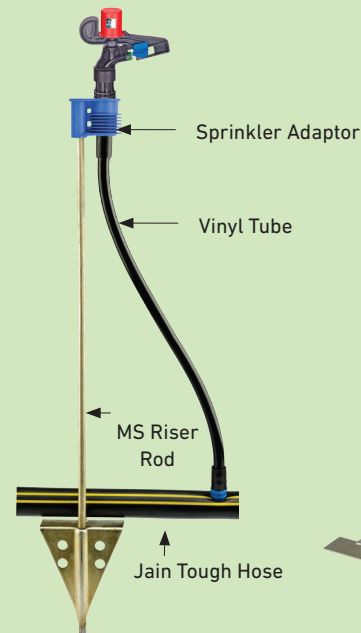
Note:

* Performance table prepared under laboratory conditions.

* For windy conditions use closer spacings.

Acurain 6025 SD U

Assembly for Orange & Red Nozzle



Acurain 6025 SD

Assembly for Green, Blue & Black Nozzle



Ordering Specifications

Items male	Item female	Nozzle Size (mm)
5164028	5164128	2.8
5164030	5164130	3.0
5164032	5164132	3.2
5164035	5164135	3.5
5164040	5164140	4.0

Note: Code shall be end with "N" for export and "J" for Indian market 1/2" male or 3/4" female on riser

